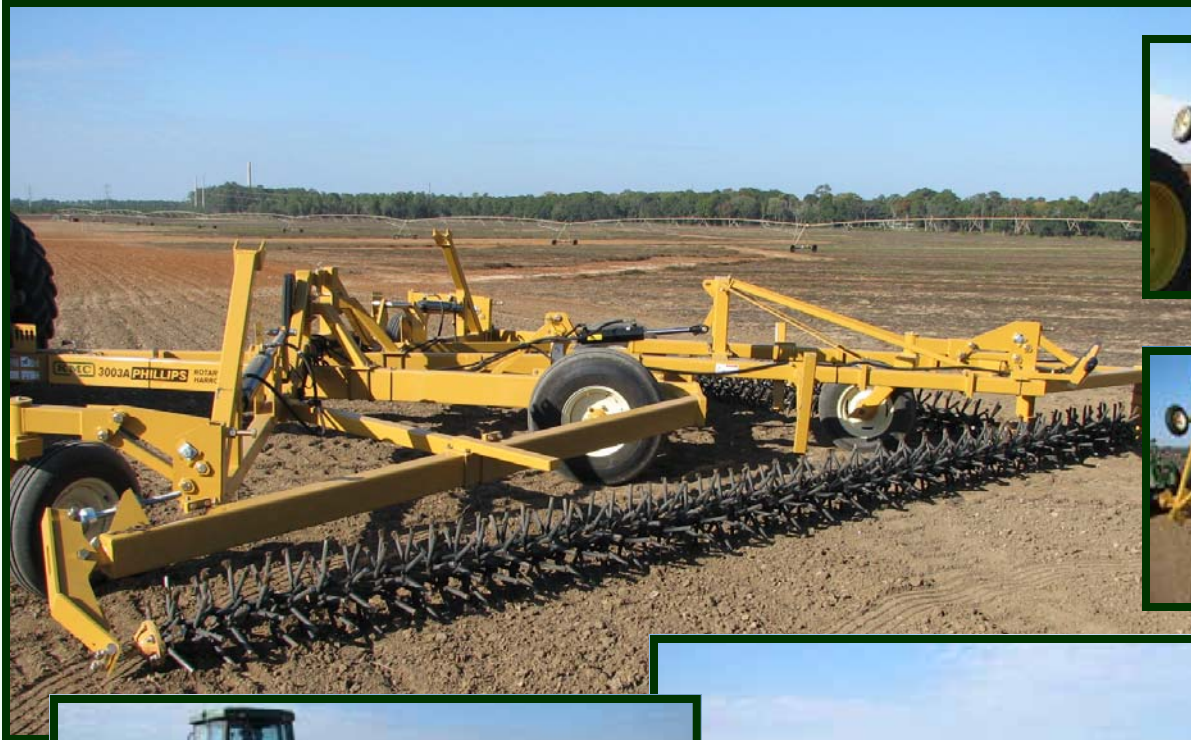




# **PHILLIPS 3000**

---

# **ROTARY HARROW**



**30 ft. Working Width**

**Kelley Manufacturing Co.**

*80 Vernon Drive  
P.O. Drawer 1467  
Tifton, GA 31793  
www.kelleymfg.com  
1-800-444-5449*



Only 10 ft Wide

Transport Position



Telescopic Wings



Offset tines disturb more soil leaving a smooth seedbed.



Optional Velmar attachment.



Canola seeded with Phillips 3000

## Transport Position

The ultra-convenient patented wing-up design is exclusive to the Phillips 3000. This sturdy design allows you to change from working to transport position in seconds without leaving the tractor seat.

## Patented Tooling

The heart of the Phillips 3000 is the patented interlocking offset tooling assembly. This superior staggered tooling design disturbs a higher percentage of soil leaving an excellent seedbed while retaining valuable moisture. The PRH tooling is self-cleaning and will not plug up even in heavy, wet residue.

## Telescopic Wings

The Phillips 3000 was redesigned to incorporate telescopic wings on both sides of the harrow. These wings eliminate the need to remove tooling and adjust the tension with ease.

## Additional Uses

Operators find that with the high travel speed and ease of use, the operations for the Phillips 3000 are endless. The Phillips 3000 is commonly used for breaking the surface crust right after planting, chemical and fertilizer incorporation, and drying out excessively wet fields.

## Residue Management

The Phillips 3000 works well in heavy, damp residue without plugging or bunching. With the residue spread evenly it allows the soil beneath to dry and warm. This tool is quite often used as a pre-plant preparation for no-till bean stubble, corn stalks, and heavy, wet wheat stubble.

## Leveling Lumps and Ridges

The harrow can be used successfully to level lumps and ridges on chiseled and cultivated ground. Running at speeds in excess of 9 mph is not uncommon. The Phillips 3000 can be used in excessively rocky ground while maintaining the level of performance.

## Seedbed Preparation

The Phillips 3000 is designed to work in only the top inch of the seedbed. The harrow fluffs up the surface, warming and leveling the soil so you can plant directly in the seedbed.

## Wet Conditions

The harrow truly excels in this arena. As soon as you feel comfortable going onto your land in the spring, the harrow is ready. Seeding 4 to 7 days before your neighbor is not uncommon when the Phillips 3000 is used.

## Specifications

30' Working Width  
 Attack Angle: 45 Degree Fixed; 40 Degree Optional  
 Transport Width: 10'4" (11' w/lights)  
 Transport Height: 11'4"  
 Transport Length: 27'6"  
 Weight: 6070 lbs

Hitch Weight: 750 lbs  
 Tractor Requirements: 90 to 110 hp  
 Tines: 3/4" od. 5160 heat treated  
 Main Wheel: 12.5L X 15, 8 ply  
 Castor Wheel: 7.5 X 14, 4 ply