



73 SERIES
7300
POULTRY HOUSE BLOWER



**OPERATOR'S MANUAL
AND
PARTS BOOK**

THIS MANUAL IS TO ACCOMPANY THE MACHINE

**PART NO: 73-PM-01
PRINTING DATE: MARCH 2019**

WARRANTY POLICY

KELLEY MANUFACTURING COMPANY (KMC) warrants that all goods sold to the original purchaser of any KMC product shall be free of any defects in material and workmanship if used under normal operating conditions. The warranty period begins on the date of purchase by the retail customer. For non-commercial users the warranty extends twelve (12) months thereafter. For commercial users the warranty period extends six (6) months thereafter. KMC's sole responsibility is to repair and/or replace the defective part or parts at no cost to the purchaser. This remedy is the **SOLE AND EXCLUSIVE REMEDY** of purchaser.

The purchaser must fill out and return the warranty registration form found in the front of the operator's manual. Failure to return the warranty registration form within 30 days shall result in the goods being sold "AS IS", and all warranties shall be excluded.

This warranty shall not apply to those items that are by nature worn in normal service, including but not limited to belts, springs, teeth, chains, etc. Items such as tires, tubes, and gearboxes and all other items warranted by the original manufacturer warranty are warranted only to the extent of the original manufacturer warranty, and KMC is not warranting any of said items. All warranty claims must be made through a KMC licensed dealer, and a warranty form request must be submitted to KMC within 30 days of failure or the warranty provision shall be unenforceable against KMC.

No agent or person has authority to change or add to this warranty as written.

THE ABOVE IS THE ONLY WARRANTY MADE BY KMC AND IS MADE EXPRESSLY IN LIEU OF ALL OTHER WARRANTIES, EXPRESSED OR IMPLIED. KMC MAKES NO WARRANTY OR MERCHANTABILITY AS TO ANY GOODS MANUFACTURED BY KMC AND FURTHER KMC DOES NOT WARRANT ANY SUCH GOODS AS SUITABLE FOR ANY PARTICULAR PURPOSE TO THE RETAIL CUSTOMER. THE SUITABILITY OF GOODS FOR ANY PURPOSE PARTICULAR TO THE CUSTOMER IS FOR THE CUSTOMER, IN HIS SOLE JUDGEMENT, TO DETERMINE. KMC FURTHER MAKES NO WARRANTIES WITH RESPECT TO ITS MANUFACTURED GOODS THAT WOULD NORMALLY BE DISCLOSED BY AN EXAMINATION. THIS IS THE FULL AND FINAL EXPRESSION OF WARRANTY LIABILITY OF KMC. NO OTHER WARRANTY, EITHER EXPRESSED OR IMPLIED, SHALL BE ENFORCEABLE AGAINST KMC.

Kelley Manufacturing Co.

80 Vernon Drive / Zip 31794

P.O. Drawer 1467 / Zip 31793

Tifton GA

OPERATOR'S MANUAL

TO THE PURCHASER

This KMC Poultry House Blower has been carefully designed and manufactured to give years of dependable service. In order to operate it efficiently and maintain it properly, please read the instructions within this manual thoroughly.

While reading the manual through, you will notice that it is divided into sections which clearly explain the assembly and operations of each component of this machine. A Table of Contents is also provided for quick reference to these sections.

Some components of this machine may be labeled left or right. The notations are determined facing the direction the machine will travel



This safety alert symbol is used throughout this manual to identify safety messages. When you see this symbol, read the message which follows as it will advise you of possible injury.

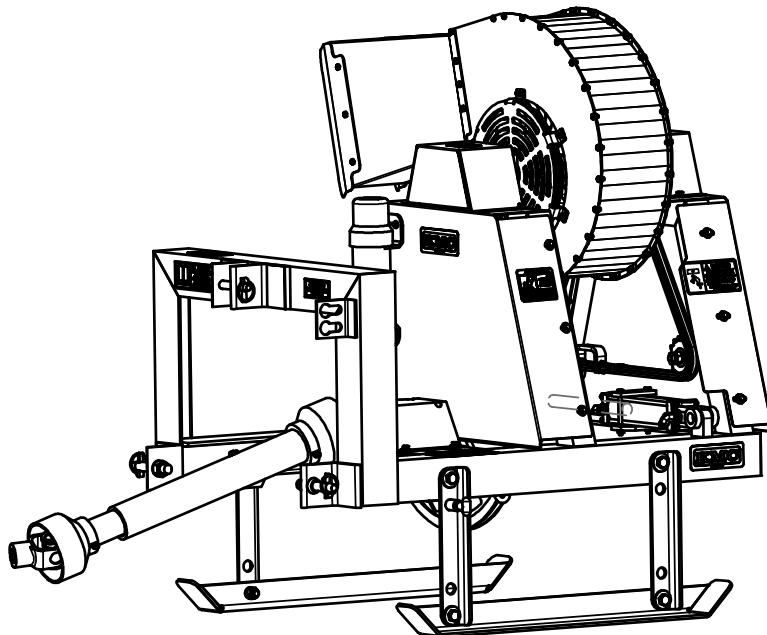
After reading this Operator's Manual, please keep it for reference each season.

To ensure procurement of the proper repair parts, please record your machine's Serial Number and Purchase Date as shown below:

Model No. _____

Serial No. _____

Purchase Date _____



RETAIL CUSTOMERS RESPONSIBILITY UNDER THE KMC WARRANTY

The retail customer's responsibilities are:

1. To read the Operator's Manual and operate the **KMC Poultry House Blower** in accordance with instructions in the manual.
2. To inspect the **KMC Poultry House Blower** daily, lubricate as specified and repair or replace parts as needed, especially when continued use would cause damage or excess wear to other parts.
3. To maintain and keep in place all safety shields and devices.
4. When Warranty Service is necessary, it is the customer's responsibility to deliver the machine to the KMC dealer from which it was purchased. Warranty repairs should be submitted to the dealer within **thirty (30)** days of failure.
5. Dealer travel to the machine or hauling the machine to his shop for the purpose of performing warranty service is not allowed under KMC warranty. It is a cost to be paid by the retail customer. Any arrangement whereby the dealer agrees to absorb all or part of this cost is strictly between the dealer and the retail customer.

SAFETY PROCEDURES

Safety and performance are the primary objectives of the designers of KMC equipment. Safety features have been incorporated into this machine where possible and warnings given in other areas. For your safety, **PLEASE** read and observe the following safety procedures.

1. Do not permit anyone to ride on the machine
2. Keep all persons a safe distance away from the rear, sides, and blower discharge of the machine while it is in operation.
3. Drive safely during transport; excessive speed while turning on rough ground or over hills could cause the tractor to tip over.
4. Make sure hitch components are attached securely before operating or transporting.
5. If equipped, use flashing warning lights on highways, except where prohibited by law.
6. Stop tractor engine before leaving the operator's position to adjust, lubricate, clean, or unclog machine.
7. Keep all shields in place.
8. Keep hands feet and clothing away from moving parts.
9. Make sure everyone is clear of machine before starting tractor or operating machine.
10. Observe all safety decals located on machine.

TABLE OF CONTENTS

OPERATOR'S MANUAL

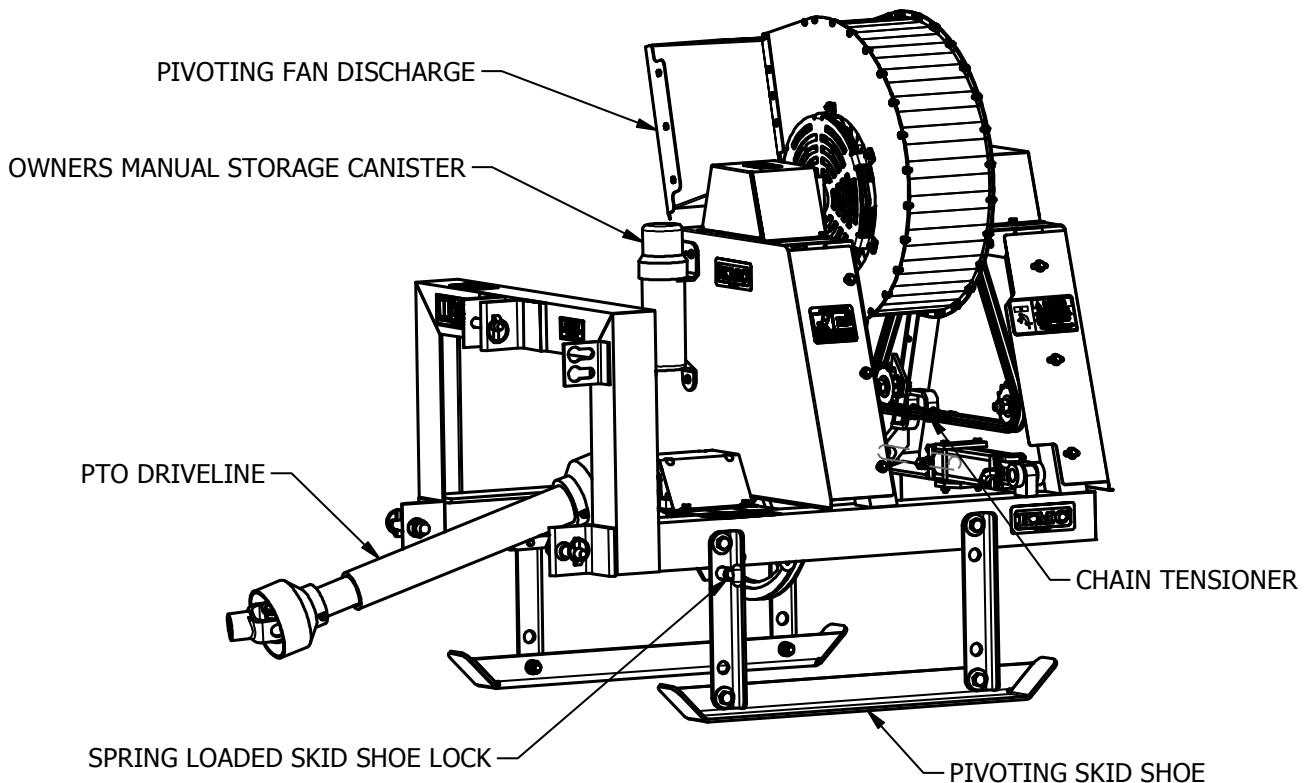
TO THE PURCHASER	1
RETAIL CUSTOMERS RESPONSIBILITY UNDER THE KMC WARRANTY.....	2
SAFETY PROCEDURES	2
POULTRY HOUSE BLOWER BASIC FEATURES	4
MACHINE SETUP	4
OPERATING INSTRUCTIONS.....	5
MAINTENANCE AND ADJUSTMENTS	6
LUBRICATION	7
STORAGE	8
SPECIFICATIONS.....	8
TROUBLESHOOTING	9
DECALS	9

PARTS BOOK

MAIN FRAME ASSEMBLY	12
ASSEMBLY, FAN HOUSING	15
FAN, SHAFT ASSY.....	16
MOUNT, FAN SIDE BRG	17
ASSY, CHAIN TENSIONER	18
ASSY, FAN TILT	18
IDLER, SPRING ARM	19
SKID SHOE ASSEMBLIES.....	20
SHIELD ASSEMBLIES	21

POULTRY HOUSE BLOWER BASIC FEATURES

This manual discusses the various features and components of the KMC Poultry House Blower. References to various components for adjustment, settings, performance, and lubrication are made. The following diagram will help in identifying some of these components.



MACHINE SETUP

Attaching to Tractor

The KMC Poultry House Blower is designed to be operated from the 3-point hitch of the tractor and operated at 540 PTO RPM.



DANGER! DO NOT OPERATE THE KMC POULTRY HOUSE BLOWER AT MORE THAN 540 PTO RPM. SERIOUS INJURY OR DEATH COULD RESULT.

Attach the KMC Poultry House Blower to the lift arms of the tractor and the adjustable top-link. With the KMC Poultry House Blower raised to the working height, adjust the top-link so that the frame is level.



DANGER! When attaching the KMC Poultry House Blower to the tractor lift arms make sure that the skid shoes are in the vertical position as shown above with both Spring Loaded Skid Shoe Locks engaged.

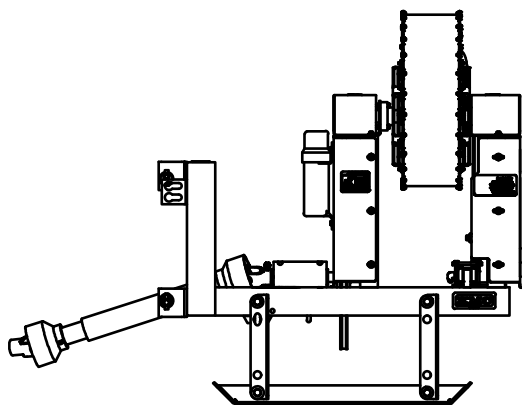
Attach the smooth end of the PTO to the 1-3/8" shaft on the KMC Poultry House Blower and secure with a 1/2" X 3" Grd 5 capscrew and 1/2" Nylon locknut.

Attach the splined end of the driveline to the tractor making sure that the detent pin snaps in place. Pull on the driveline to make sure that it is locked in place. If the driveline slides on the PTO shaft it is not properly attached to the tractor, repeat the above procedure. Make sure that the PTO driveline shielding rotates freely on the driveline. Attach the safety chains, allowing sufficient slack for raising and lowering the machine.

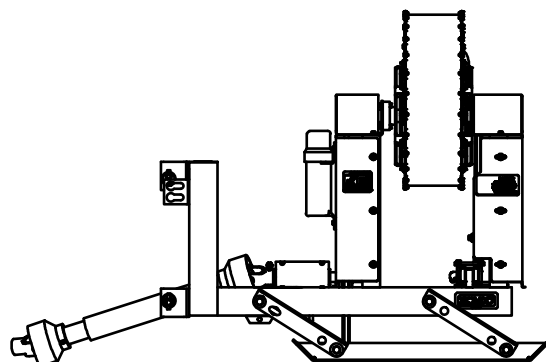
Connect the KMC Poultry House Blower's two hydraulic lines to available hydraulic ports on the tractor. The KMC Poultry House Blower is designed to handle a system pressure of 3,000 PSI. **Do not exceed this pressure.**

OPERATING INSTRUCTIONS

Pivoting Skid Shoe



CONNECT AND DISCONNECT TO TRACTOR
WITH SKID SHOES IN THIS POSITION



CAN BE OPERATED WITH SKID SHOE IN THIS
POSITION FOR MORE OVERHEAD CLEARANCE

Connect KMC Poultry House Blower to tractor with pivoting skid shoe arms pinned in the vertical position as shown above. To operate the KMC Poultry House Blower lower to the ground, the skid shoes can be pivoted back as shown above.



DANGER! Before adjusting the skid shoes, disengage the PTO and turn the tractor off.

Operating Blower

With the engine at idle speed slowly engage the PTO to 540 RPM.



WARNING! Always engage PTO clutch slowly and smoothly at low RPM. Failure to do so may damage drive components.

Fan Discharge

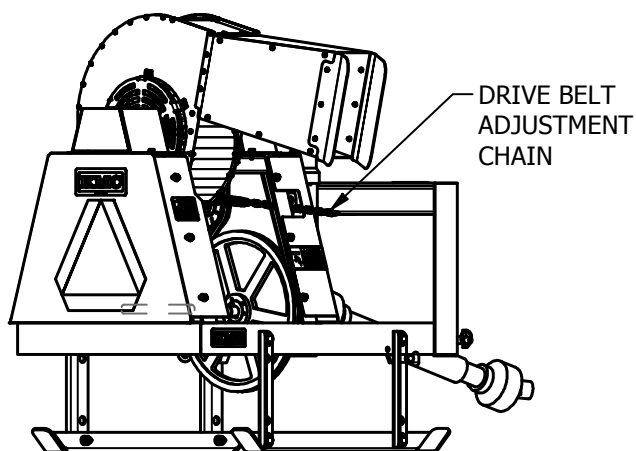
The KMC Poultry House Blower is designed so that the fan discharge rotates approximately 235 degrees. This allows for downward air on either side of the machine if desired. Use the hydraulic remotes on the tractor to rotate the fan discharge right or left

MAINTENANCE AND ADJUSTMENTS



DANGER! Always make any adjustments or perform maintenance with the PTO and tractor turned off.

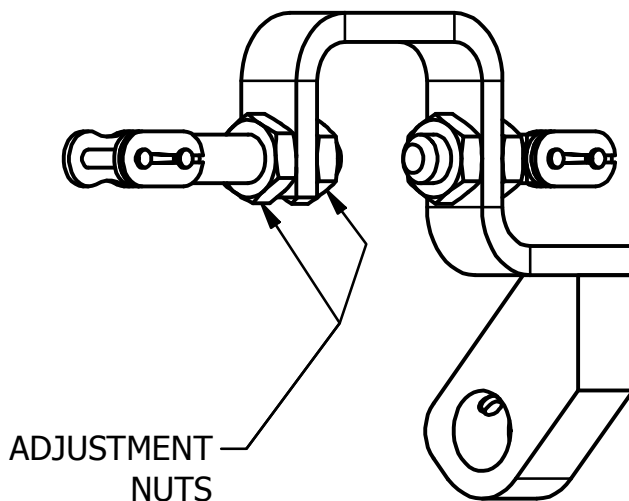
DRIVE BELT



Drive belt tension can be adjusted by pulling on the Adjustment Chain and locking the chain in the keyhole. Initially pull chain until 13 links are showing. As belt wears chain may need to be pulled tighter.

The drive belt can be easily replaced by releasing the tension on the Adjustment Chain and removing the front shield. After replacing the belt and shield re-tension as indicated above.

ROTATING FAN CHAIN ADJUSTMENT

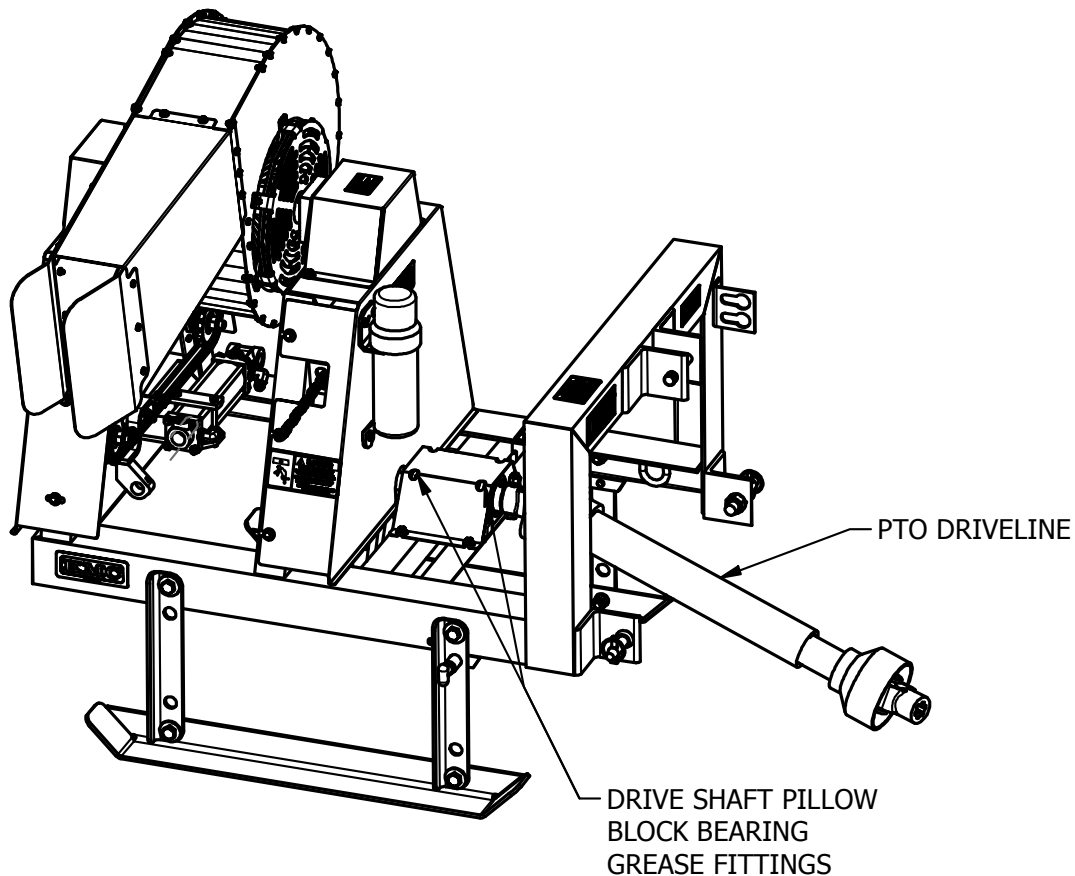


If the fan housing does not rotate smoothly, the rotating fan chain can be retensioned by removing the rear shield and adjusting the 5/8" jam nuts as shown. After adjustment reinstall the rear shield.

LUBRICATION



DANGER! Always make any adjustments or perform maintenance with the PTO and tractor turned off.



DRIVE SHAFT PILLOW BLOCK BEARINGS

We recommend that the Drive Shaft Pillow Block Bearings be greased on a weekly basis (every 40 hours of use), Also grease these bearings prior to storage. The drive shaft shield has holes to allow for greasing without having to remove the shield. If the shield is removed for any reason reinstall it before operating this machine.

PTO DRIVELINE

The PTO Driveline should be greased as follows: Grease the universal joints and shield fitting after every 8 hours of use. Grease the PTO locking pin and driveline tubes after every 20 hours of use.

STORAGE

After each use the KMC Poultry House Blower should be washed down thoroughly, removing all litter. After washing, treating with a disinfectant is recommended to kill any remaining bacteria. The next step is treating the machine with a soluble oil to protect it from rust and corrosion. One product which meets these requirements is called "Film Fluid" manufactured by Eureka Chemical Co., San Francisco, CA. It is sold in some tractor dealerships and other farm supply dealers.

SPECIFICATIONS

Weight:	514 lbs.
Width (Frame):	39"
Width (Horizontal Fan):	54.375"
Height: Skid Shoes Down (Horizontal Fan):	58.25"
Height: Skid Shoes Down (Vertical Fan):	75.5"
Height: Skid Shoes Up (Horizontal Fan):	52"
Height: Skid Shoes Up (Vertical Fan):	69.25"
CFM:	5,600
Hitch:	CAT I
PTO Horsepower (Minimum):	20 HP
Fan Chute Rotation:	235°

TROUBLESHOOTING

TROUBLE	PROBABLE CAUSE	CORRECTIVE ACTION
Low Air	<ul style="list-style-type: none"> PTO not running at 540 RPM Fan belt not tight 	<ul style="list-style-type: none"> Run tractor at 540 RPM Tighten fan belt using belt adjustment chain
Pivoting fan chute is loose or floppy	<ul style="list-style-type: none"> Excessive slack in chain 	<ul style="list-style-type: none"> Re-tension chain using adjusting screws

DECALS



IMPORTANT! Machine decals are an important aspect of proper machine operation, maintenance, and safety. Replace any missing or damaged decals immediately.

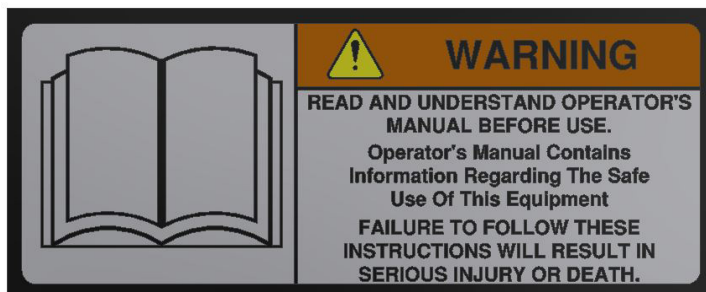
Part Number: 03-050-040



Part Number: 33-050-037



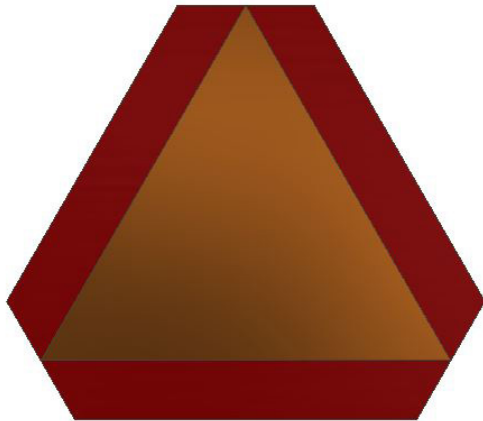
Part Number: 61-050-052



Part Number: 64-050-007



Part Number: 33-050-041



Part Number: 33-050-036



Part Number: 33-050-248



Part Number: 73-150-00001



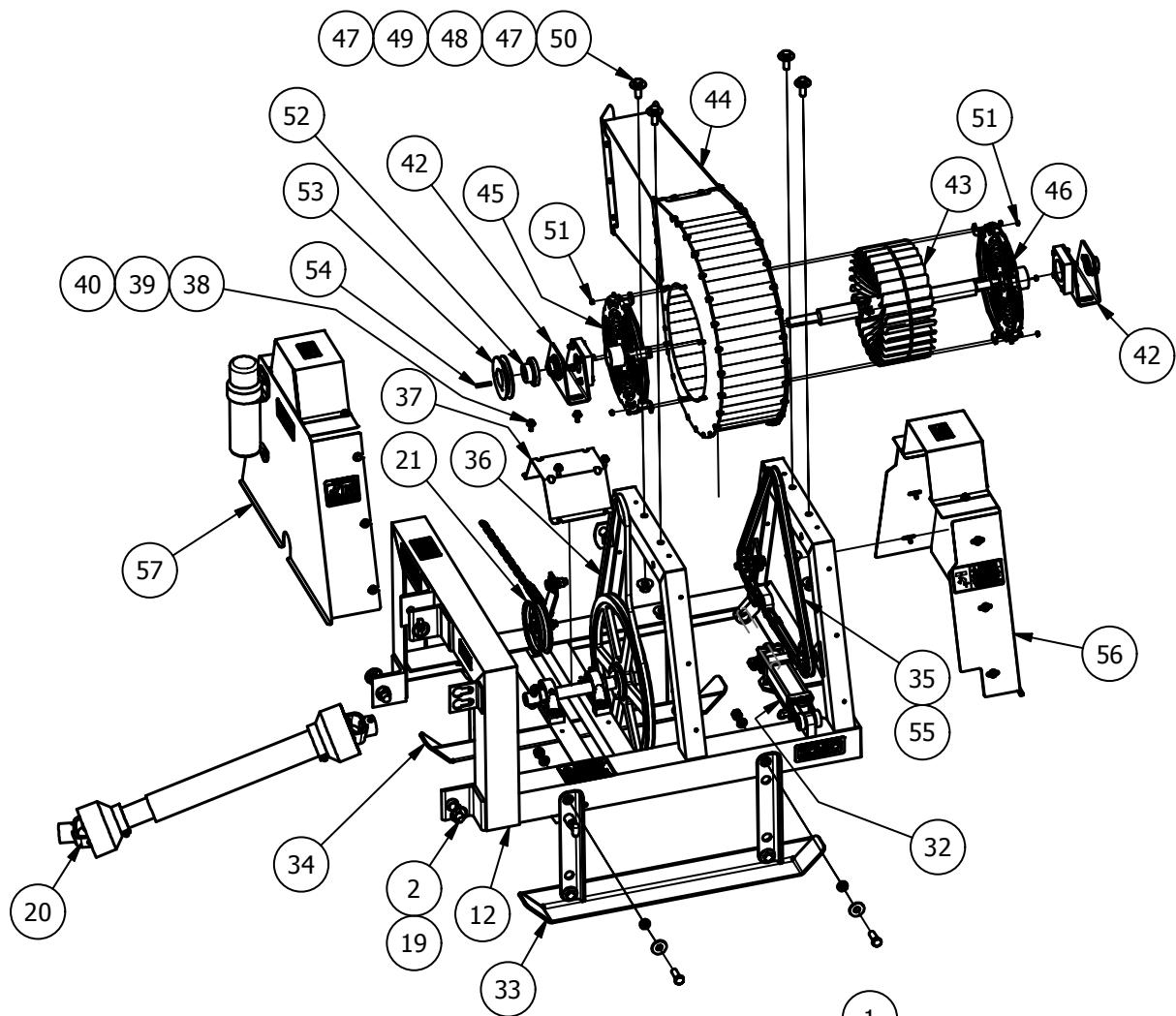
Part Number: 02-050-078



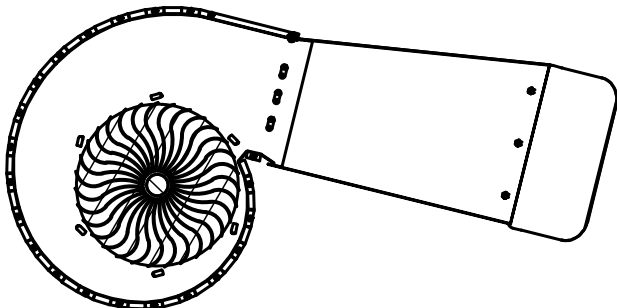
PARTS BOOK

MAIN FRAME ASSEMBLY

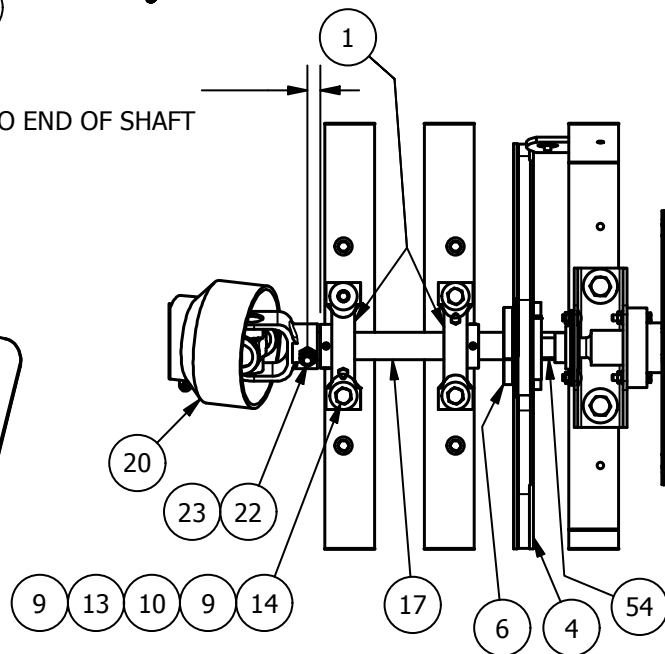
(73-090-005)



NOTE:
NOTICE ORIENTATION OF FAN
IN FAN HOUSING



1" (REF)
1-3/4" TO END OF SHAFT



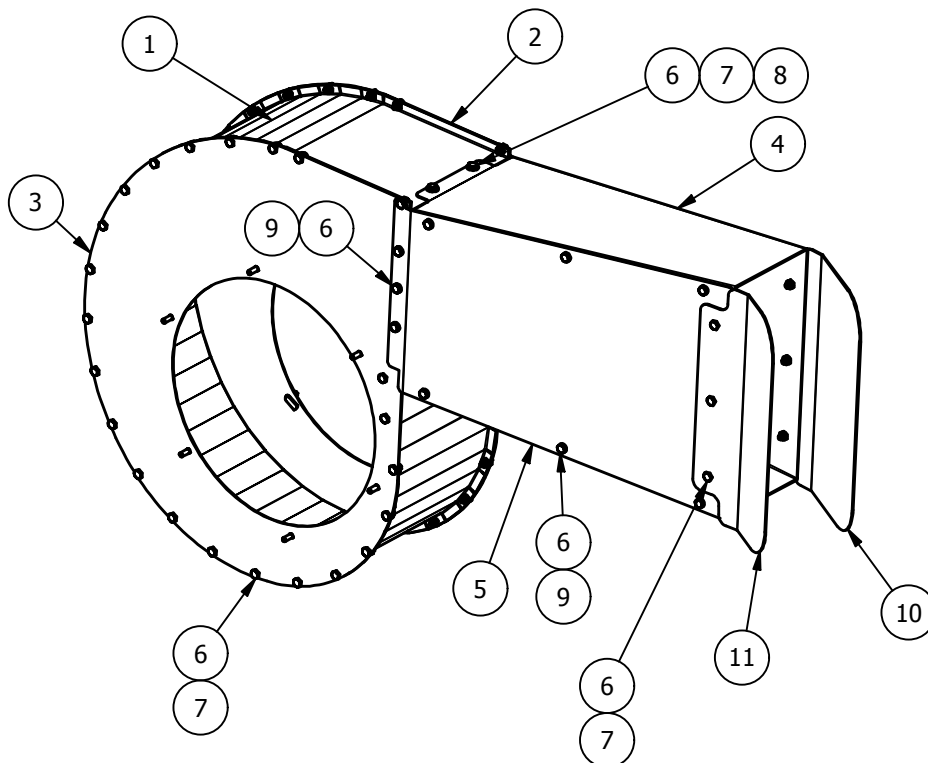
MAIN FRAME ASSEMBLY
(73-090-005)

ITEM	PART NO	SERIAL NO OR YR	DESCRIPTION	QTY
1	73-051-001		BEARING, P3W222EL 1-3/8	2
2	24-050-003		PIN, CAT1 LIFT ARM	2
3	33-050-471		PIN, Ø3/4 X 3 3/4" USABLE	1
4	73-053-001		SHEAVE, 1B200SK	1
5	62-020040		FLATWASHER, 5/8 SAE PLT	18
6	73-053-003		BUSHING, SK 1-3/8	1
7	33-052-015		IDLER, #60-15T SPROCKET	2
8	72-010120		LOCKNUT, 5/8 NC HEX NYLON INSERT PLT	2
9	62-010200		FLATWASHER, 1/2 STD PLT	8
10	68-010250		HEXNUT, 1/2 PLT	4
11	62-010010		FLATWASHER, 1/4 STD PLT	2
12	73-080-030		FRAME, BLOWER	1
13	66-010250		LOCKWASHER, 1/2" REGULAR PLT	4
14	48-090600		CAPSCREW, 1/2 X 2 NC G5 PLT	4
15	68-010050		HEXNUT, 1/4 PLT	1
16	66-010050		LOCKWASHER, 1/4 PLT	1
17	73-026-007		SHAFT, INPUT 1-3/8 SMOOTH	1
18	42-026-024		KEY, 5/16 X 2"	1
19	02-050-002		KLIK PIN, 7/16 X 1-3/4	3
20	73-055-001		DRIVELINE, 1 3/8-1000 '94	1
21	73-081-024		IDLER, SPRING ARM	1
22	48-090700		CAPSCREW, 1/2 X 3 1/4 NC G5 PLT	1
23	72-010101		LOCKNUT, 1/2 NC NYLON	1
24	03-050-040		DECAL, 2 1/4 X 6 KMC	2
25	03-050-095		DECAL, PTO	1
26	33-050-037		DECAL, 540 RPM	1
27	02-050-078		DECAL, SHIELD WARNING	1
28	61-050-052		DECAL, READ INSTRUCT WARNING	1
29	64-050-007		DECAL, RESPIRATORY	1
30	48-090010		CAPSCREW, 1/4 X 3/4 NC G5 PLT	1
31	73-023-021		CAP, CYLI NDER	1
32	73-081-027		ASSY, FAN TILT	1
33	73-081-025		ASSY, SKID SHOE LT	1
34	73-081-026		ASSY, SKID SHOE RT	1
35	73-052-006		CHAIN, 60RC-85 PITCHES	1
36	73-053-009		V-BELT, SINGLE BP87	1

MAIN FRAME ASSEMBLY
(73-090-005)

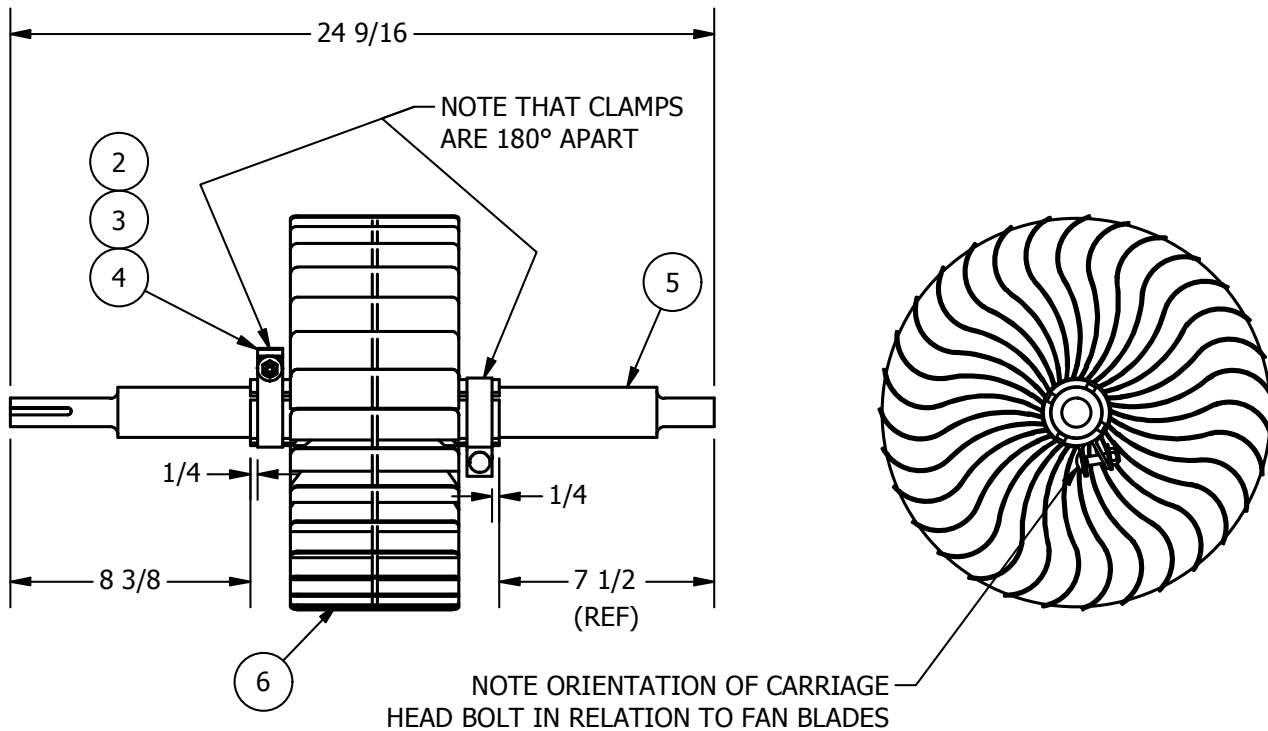
ITEM	PART NO	SERIAL NO OR YR	DESCRIPTION	QTY
37	73-027-068		SHIELD, DRIVE SHAFT	1
38	48-090036		CAPSCREW, 5/16 X 1 NC G5 PLT	4
39	62-010050		FLATWASHER, 5/16" STD PLT	4
40	66-010100		LOCKWASHER, 5/16 PLT	4
41	48-091000		CAPSCREW, 5/8 x 3 NC G5 PLT	2
42	73-081-031		MOUNT, FAN SIDE BRG	2
43	73-081-007		FAN, SHAFT ASSY	1
44	73-081-039		ASSEMBLY, FAN HOUSING	1
45	73-080-042	92991 - 93022	WELDMENT, FRONT SCREEN COVER	1
	73-080-052	93023 -	WELDMENT, FRONT SCREEN COVER	
46	73-080-040	92991 - 93022	WELDMENT, REAR SCREEN COVER	1
	73-080-054	93023 -	WELDMENT, REAR SCREEN COVER	
47	62-010250		FLATWASHER, 5/8 STD PLT	8
48	66-010300		LOCKWASHER, 5/8 PLT	4
49	68-010300		HEXNUT, 5/8 PLT	4
50	48-090920		CAPSCREW, 5/8 X 1 3/4 G5 PLT	4
51	72-010020		LOCKNUT, 1/4 STOVER GA PLT	12
52	33-053-101		TAPER BUSHING, SDS 1"	1
53	72-053-005		SHEAVE, 1B46SDS	1
54	03-026-408		KEY, 1/4 X 1 3/4"	1
55	03-052-037		LINK, #60 OFFSET	1
56	73-081-030		ASSY, REAR SHIELD	1
57	73-081-029		ASSY, FRONT SHIELD	1
58	48-090073		CAPSCREW, 5/16X4 NC HX HD GD 5 PLT	2
59	78-020045		LOCKNUT, 5/16-18 SMOOTH FLG	2

ASSEMBLY, FAN HOUSING (73-081-039)



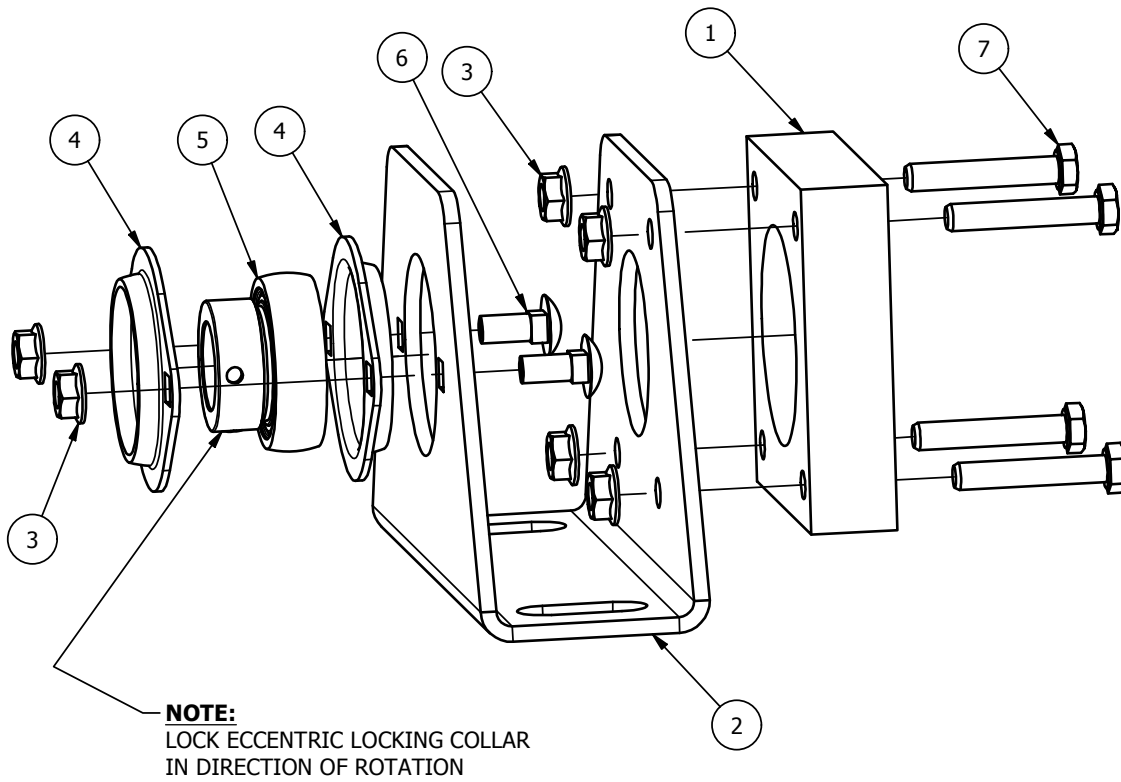
ITEM	PART NO.	SERIAL NO OR YR	Description	QTY
1	73-027-053	92991 - 93022	VOLUTE, FAN MIDDLE	1
	73-027-079	93023-	COVER, MIDDLE	1
2	73-081-022	92991 - 93022	FAN SIDE ASSY, FRONT	1
	73-080-050	93023-	WELDMENT, FRONT FAN SIDE	1
3	73-081-021	92991 - 93022	FAN SIDE ASSY, REAR	1
	73-080-051	93023-	WELDMENT, REAR FAN SIDE	1
4	73-080-041		CHUTE, FRONT	1
5	73-027-059		CHUTE, REAR	1
6	48-090000		CAPSCREW, 1/4 X 1/2 NC G5 PLT	66
7	72-010020		LOCKNUT, 1/4 STOVER GA PLT	54
8	62-010010		FLATWASHER, 1/4 STD PLT	2
9	66-010050		LOCKWASHER, 1/4 PLT	12
10	73-027-060		DEFLECTOR, FAN LONG	1
11	73-027-067		DEFLECTOR, FAN SHORT	1

FAN, SHAFT ASSY (73-081-007)



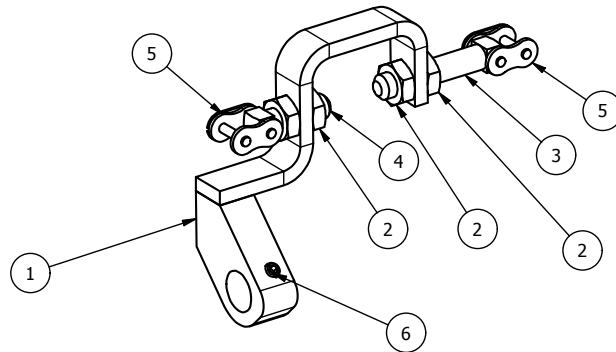
ITEM	PART NO	SERIAL NO OR YR	DESCRIPTION	QTY
1	52-050019		CARRIAGE BOLT, 5/16 X 1 1/4 NC G5 PLT	2
2	72-010025		LOCKNUT, 5/16 STOVER GB PLT	2
3	62-010050		FLATWASHER, 5/16" STD PLT	2
4	33-050-147		CLAMP, FAN ROTOR	2
5	73-026-006		SHAFT, DRIVEN 1-3/4	1
6	33-050-148		ROTOR, WHOLE FAN	1

MOUNT, FAN SIDE BRG **(73-081-031)**



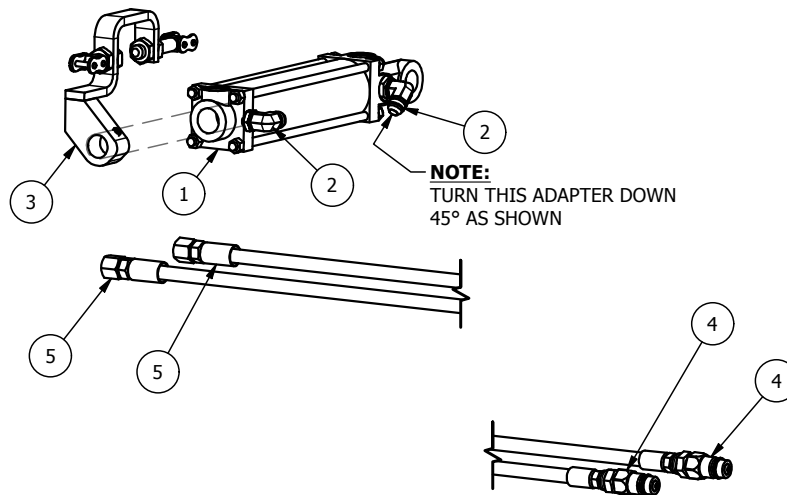
ITEM	PART NO	SERIAL NO OR YR	DESCRIPTION	QTY
1	73-023-003		SUPPORT, FAN HOUSING	1
2	73-027-066		MOUNT, BENT BRG	1
3	78-020049		5/16" WHIZ NUT	6
4	04-051-002		FLANGE, 52 MST	2
5	03-051-021		BEARING, 1" EXT. W/ COLLAR	1
6	52-050005		CARRIAGE BOLT, 5/16 X 3/4 NC GD 5 PLT	2
7	48-090033		CAPSCREW, 5/16 X 1-3/4 G5 PLT	4

ASSY, CHAIN TENSIONER (73-081-028)



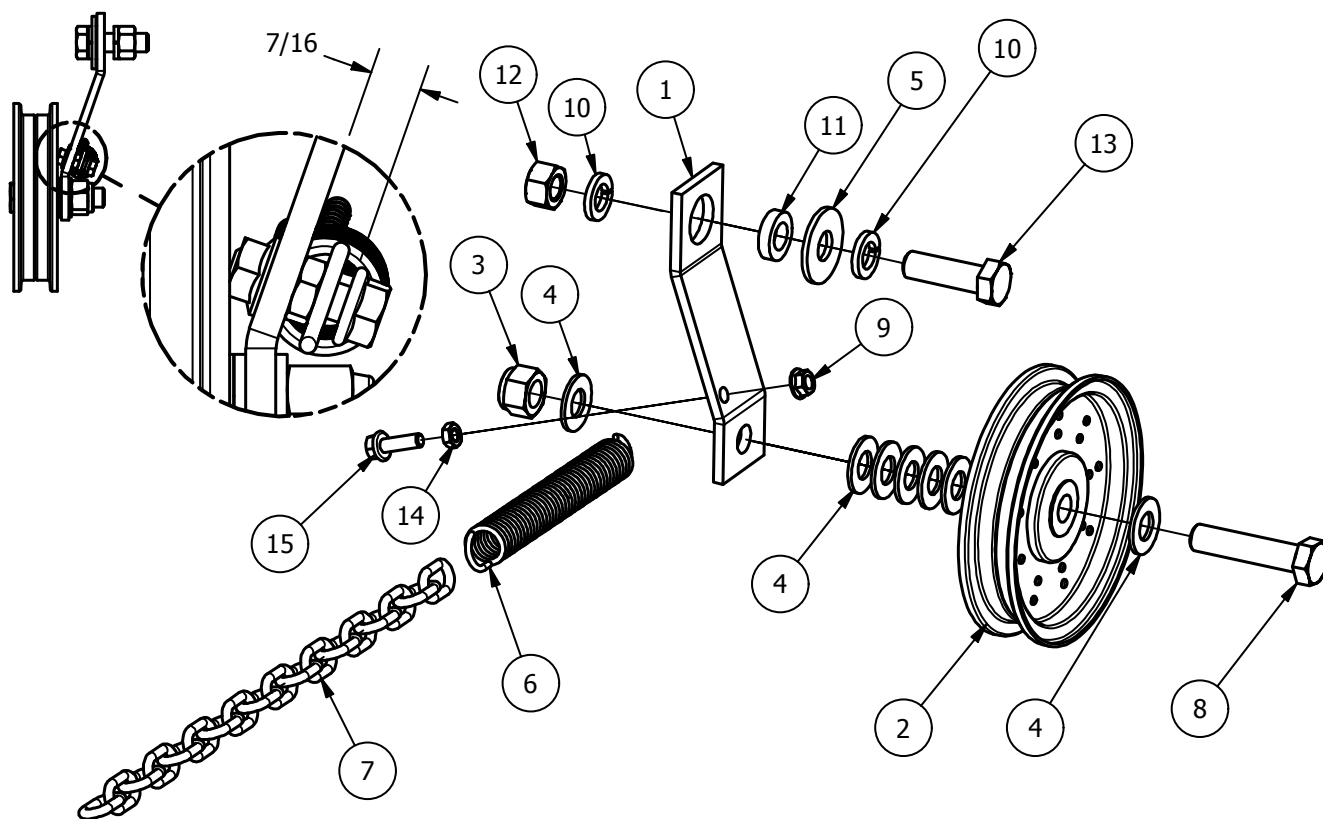
ITEM	PART NO	SERIAL NO OR YR	DESCRIPTION	QTY
1	73-080-039		WELDMENT, CHAIN TENSIONER	1
2	70-010140		JAMNUT, 5/8 NC PLT	4
3	73-026-010		SCREW, CHAIN TENSIONER LONG	1
4	73-026-011		SCREW, CHAIN TENSIONER SHORT	1
5	33-052-027		LINK, #60 OFFSET	2
6	54-010060		SETSCREW, 3/8X1/2 NYLON TIP ALLEN HD	1

ASSY, FAN TILT (73-081-027)



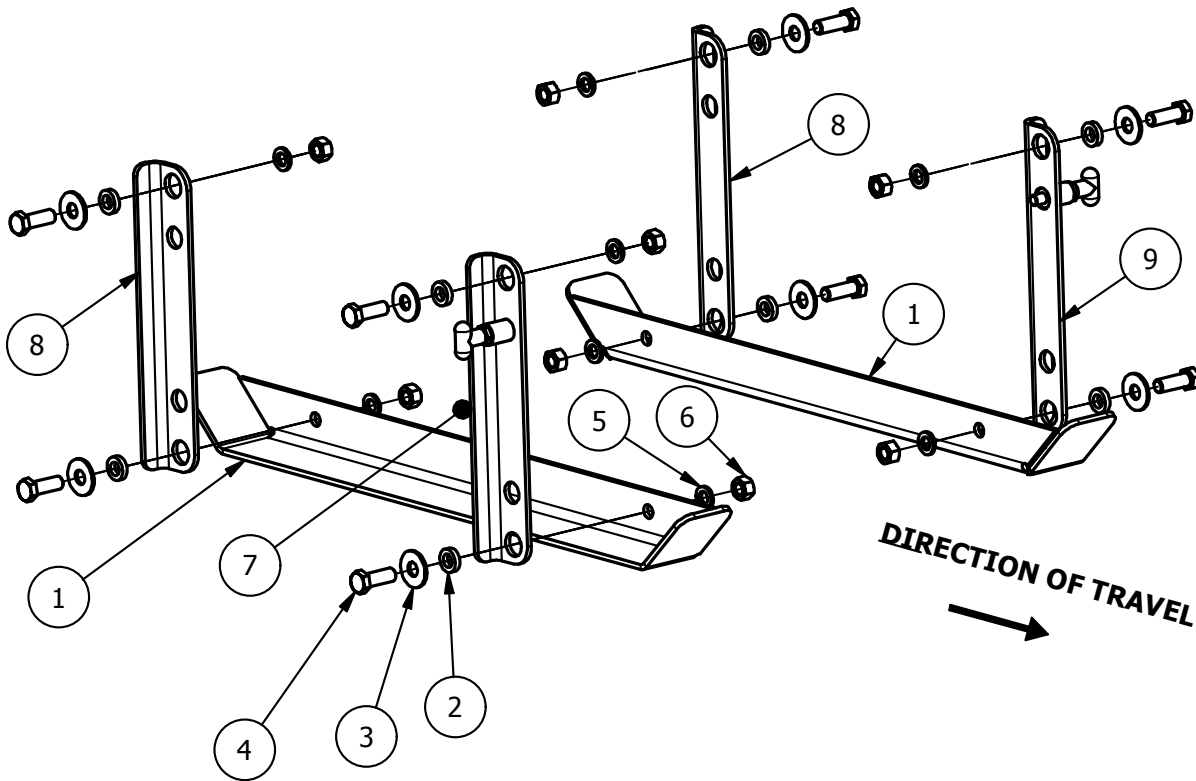
ITEM	PART NO	SERIAL NO OR YR	DESCRIPTION	QTY
1	33-061-204		CYLINDER, 2.5 X 8 X 1.125	1
2	73-159-00000		ADAPTER, 8MB-8MJ-90-0.031RESTRICTOR	2
3	73-081-028		ASSY, CHAIN TENSIONER	1
4	47-059-002		QUICK COUPLER, 1/2" NPTF MALE	2
5	33-059-094		HOSE, 6M3K-8FJX-8MP-102	2

IDLER, SPRING ARM (73-081-025)



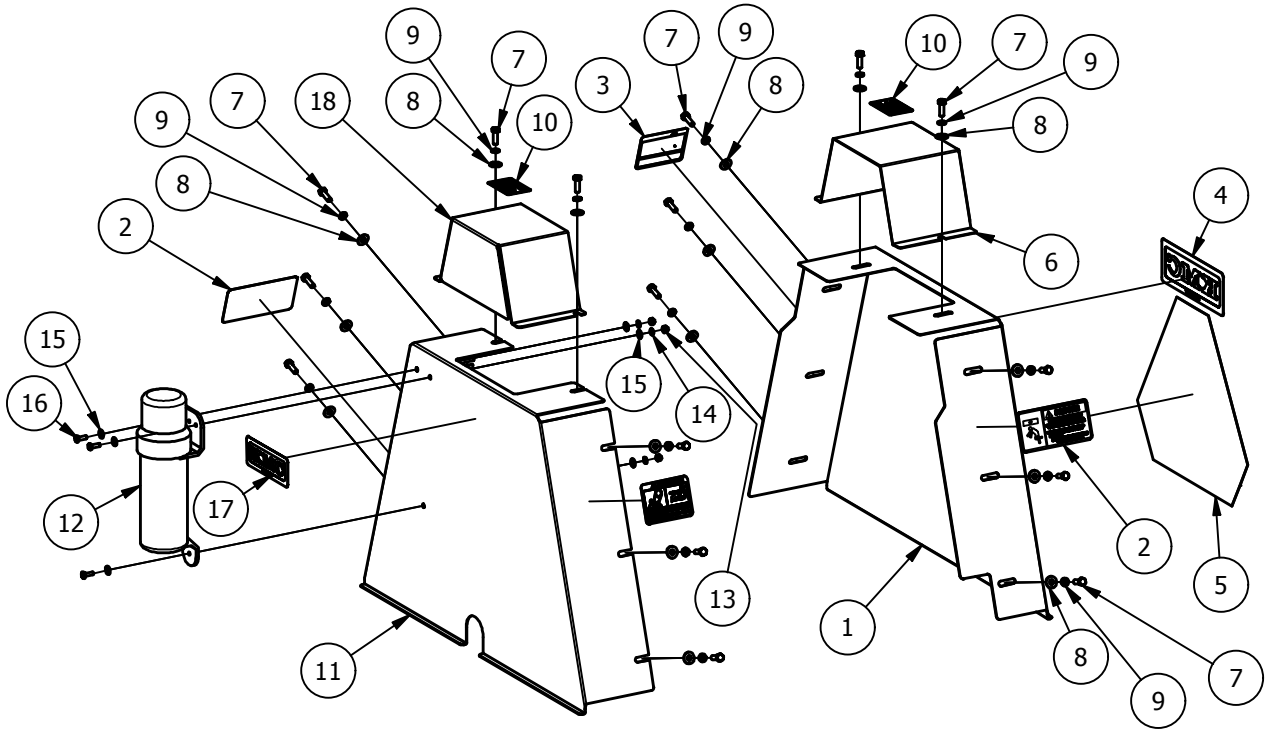
ITEM	PART NO	SERIAL NO OR YR	DESCRIPTION	QTY
1	73-023-016		ARM, IDLER	1
2	03-053-023		IDLER, 1" x 5-1/2"	1
3	72-010120		LOCKNUT, 5/8 NC HEX NYLON INSERT PLT	1
4	62-020040		FLATWASHER, 5/8 SAE PLT	7
5	62-010250		FLATWASHER, 5/8 STD PLT	1
6	15-050-002		SPRING, 1 X 7-1/4 EXTENSION	1
7	03-050-004		3/16 PROOF CHAIN - 18 LINKS	1
8	48-090985		CAPSCREW, 5/8 X 2-3/4 NC G5 PLT	1
9	78-020049		5/16" WHIZ NUT	1
10	66-010300		LOCKWASHER, 5/8 PLT	2
11	73-024-011		BUSHING, IDLER	1
12	68-010300		HEXNUT, 5/8 PLT	1
13	48-090950		CAPSCREW, 5/8 X 2 NC G5 PLT	1
14	70-010025		JAM NUT, 5/16 NC HEX PLT	1
15	80-040100		5/16-18 x 1 WHIZ FLANGE LOCKSCREW	1

SKID SHOE ASSEMBLIES
(73-081-025 ASSY, SKID SHOE LT)
(73-081-026 ASSY, SKID SHOE RT)



ITEM	PART NO	SERIAL NO OR YR	DESCRIPTION	QTY
1	73-080-043		WELDMENT, SKID SHOE	2
2	73-024-011		BUSHING, IDLER	8
3	62-010250		FLATWASHER, 5/8 STD PLT	8
4	48-090920		CAPSCREW, 5/8 X 1 3/4 G5 PLT	8
5	66-010300		LOCKWASHER, 5/8 PLT	8
6	68-010300		HEXNUT, 5/8 PLT	8
7	73-080-038		ARM, PIVOT RT	1
8	73-027-056		LEG, PIVOT	2
9	73-080-037		ARM, PIVOT LT	1

SHIELD ASSEMBLIES
(73-081-029 ASSY, FRONT SHIELD)
(73-081-030 ASSY, REAR SHIELD)



ITEM	PART NO	SERIAL NO OR YR	DESCRIPTION	QTY
1	73-027-063		SHIELD, REAR	1
2	73-150-00001		DECAL, ROTATING FAN NOZZLE DANGER	2
3	33-050-248		DECAL, BELT AND CHAIN DANGER	2
4	02-050-167		DECAL, KMC WHITE 3-3/8 X 9	1
5	33-050-041		SMV EMBLEM	1
6	73-027-064		SHIELD, REAR TOP	1
7	48-090036		CAPSCREW, 5/16 X 1 NC G5 PLT	16
8	62-010050		FLATWASHER, 5/16" STD PLT	16
9	66-010100		LOCKWASHER, 5/16 PLT	16
10	33-050-036		DANGER, FAN DECAL	2
11	73-027-061		SHIELD, FRONT	1
12	49-050-012		CANISTER, MANUAL	1
13	68-010050		HEXNUT, 1/4 PLT	3
14	66-010050		LOCKWASHER, 1/4 PLT	3
15	62-010010		FLATWASHER, 1/4 STD PLT	6
16	48-090010		CAPSCREW, 1/4 X 3/4 NC G5 PLT	3
17	03-050-040		DECAL, 2 1/4 X 6 KMC	1
18	73-027-062		SHIELD, FRONT TOP	1



80 Vernon Drive, Tifton, GA 31794

P.O. Box 1467, Tifton, GA 31793



Telephone: (229) 382-9393

Toll Free: 1-800-444-5449

Fax: (229) 382-5259

Email: info@kelleymfg.com