

# KELLEY MANUFACTURING CO. POULTRY HOUSE EQUIPMENT



**PATENTED**  
[www.kelleymfg.com/  
about/patents.aspx](http://www.kelleymfg.com/about/patents.aspx)



[www.kelleymfg.com](http://www.kelleymfg.com)

EMPLOYEE OWNED & OPERATED



**KMC**

KELLEY

# 6410 LITTER WINDROWER

The KMC Litter Windrower is designed to facilitate the practice of composting in poultry houses. This tool will greatly reduce cake size and form tight, tall windrows to insure heat levels that kill disease causing pathogens. After windrows heat out the first time, the Windrower efficiently turns the windrow for further composting. When composting is completed, the Windrower is used again to quickly level the composted litter in preparation for the new flock.

Main components consist of a blade; upper and lower augers; a pivoting support arm; and a pair of hydraulically operated, castor gauge wheels. Adjustable skid shoes are also provided to further prevent gouging. The gauge wheels, in combination with a semi-mount hook-up, allow the Windrower to be used with smaller tractors that are not capable of handling the weight. Two hydraulic cylinders are standard, one for offsetting the blade horizontally and the other for operating the gauge wheels. Additional cylinders are available for changing the angle of the blade relative to the tractor and for adjusting the angle of the blade relative to the ground. On standard machines, these adjustments are done manually. There is a cake deflector on the discharge end for the purpose of breaking and deflecting cake into the cake breakers, also located on the discharge end of each auger. A depth gauge is visible over the right shoulder of the operator to insure the blade is running at the desired depth.

## ***SPEED AND EFFICIENCY:***

Several features account for the speed and efficiency of the KMC Litter Windrower: PTO drive that delivers more horsepower to the augers; unique, overlapping auger system for greater discharge capacity, contoured blade with multiple run angles for directed litter flow; open discharge end for unobstructed flow into the windrow; and gauge wheels and skid shoes that allow for speedy operation while minimizing chances of gouging the clay pad.

## ***CAKE BREAKING:***

The overlapping augers, cake deflector, and cake breakers are standard equipment for reducing the size cake going into the windrow. The cake deflector and cake breakers can be removed if reducing the size of cake is not desired.



**PATENTED**  
[www.kelleymfg.com/  
about/patents.aspx](http://www.kelleymfg.com/about/patents.aspx)



UNIQUE, OVERLAPPING AUGER SYSTEM FOR GREATER DISCHARGE CAPACITY



CAKE BREAKER & CAKE DEFLECTOR



ADJUSTABLE SKID SHOE TO PREVENT GOUGING CLAY



OPEN DISCHARGE END FOR UNOBSTRUCTED LITTER FLOW

## MAIN FEATURES:

- TWO OVERLAPPING, FORWARD TURNING AUGERS FOR GREATER DISCHARGE CAPACITY
- OPEN DISCHARGE END TO ALLOW UNOBSTRUCTED LITTER FLOW
- 90 DEGREE HORIZONTAL ADJUSTMENT (45 DEGREE ON BLADE & 45 DEGREE ON SUPPORT ARM)
- CAKE BREAKER & CAKE DEFLECTOR FOR REDUCING CAKE SIZE
- ADJUSTABLE SKIDS TO PREVENT GOUGING
- SPRING LOADED WALL EDGER TO RUN CLOSELY AGAINST WALL
- BOLT ON REVERSIBLE BLADE & WEAR STRIP FOR EASY REPLACEMENT
- #80 HEAVY DRIVE CHAINS RUN IN GREASE BATH
- PTO CV DRIVE FOR MAXIMUM POWER AND EFFICIENCY
- OVERSIZED PIVOT PINS WITH GREASED BUSHINGS FOR LONGEVITY
- SHEAR BOLT PROTECTED GEAR BOX
- REQUIRES TWO HYDRAULIC REMOTES FOR STANDARD CYLINDERS
- REAR HYDRAULIC CYLINDER OPERATED GAUGE WHEELS

## SPECIFICATIONS:

- 3 FT TALL X 9 1/2 FT WIDE WORKING AREA
- TWO AUGERS- 14 IN. DIAMETER, 3/8 IN. MATERIAL
- APPROXIMATE WEIGHT- 1900 LB
- CATEGORY 2 HITCH
- 65 HP PTO MIN. FOR MAX. EFFICIENCY (WILL RUN WITH LESS HP BUT MAY TAKE MORE THAN ONE PASS)

## \*WHAT'S NEW: MODEL 6410\*

- HIGHER CAPACITY GEARBOX INCREASES AUGER SPEED BY 10% RESULTING IN INCREASED EFFICIENCY
- UNIVERSAL JOINT BALL SHEAR ASSEMBLY FOR SMALL SHAFT MISALIGNMENTS AND IMPROVED SHEAR BOLT PERFORMANCE
- HEAVY DUTY AUGERS FOR OPTIMUM PERFORMANCE IN THICK LITTER
- LARGER SHAFTS AND BEARINGS FOR LONGER WEAR LIFE AND A GREATER LOAD CAPACITY IN THICK LITTER AND CAKE

## OPTIONS:

- ONE HYDRAULIC CYLINDER FOR BLADE ANGLE
- ONE HYDRAULIC CYLINDER FOR TILT ANGLE



PATENTED  
[www.kelleymfg.com/about/patents.aspx](http://www.kelleymfg.com/about/patents.aspx)

HYDRAULIC, CASTOR GAUGE WHEELS FOR DEPTH CONTROL



#80 HEAVY DUTY DRIVE CHAINS IN GREASE BATH

PTO DRIVEN FOR MAXIMUM POWER

**NEW  
PRODUCT**



## ***KEY FEATURES:***

- AT 540 PTO RPM FAN SPINS AROUND 2,200 RPM.
- FAN CHUTE ROTATES APPROXIMATELY 254 DEGREES.
  - THIS ALLOWS FOR DOWNWARD BLOWING ON EITHER SIDE OF MACHINE.
- DEFLECTOR PANELS ON BLOWER CHUTE ALLOW FOR AIR TO BE DIRECTED REARWARD KEEPING OPERATOR CLEAN.
  - STRAIGHT PANELS CAN BE USED IF DESIRED.
- LOWERED FAN HEIGHT ALLOWS FOR MORE CLEARANCE.
- PIVOTING SKID SHOES ALLOW FOR:
  - GREATER HITCH PIN HEIGHT FOR EASIER HOOKUP TO TRACTOR.
  - LOWER OPERATION OF MACHINE WHILE STILL PROTECTING THE DRIVE PULLEY.
- VERTICAL SHOOT OPENING (VERSUS HORIZONTAL) ALLOWS FOR WIDER BLOWING COVERAGE AREA.



## SPECIFICATIONS:

- HEIGHT WITH SKID SHOES IN RUNNING POSITION (NOT IN PARKING POSITION)
  - 70" WITH FAN IN FULL VERTICAL POSITION
  - 53" WITH FAN IN FULL HORIZONTAL POSITION
  - 50" WITH FAN AT 45 DEGREE POSITION
- MINIMUM OF 20 HP REQUIREMENT
- WEIGHT 509 LBS





# POULTRY HOUSE CLEANOUT MACHINES

## HEAVY DUTY



4250 LP Low Profile Model

### FEATURES UNIQUE TO HD MODELS:

- LARGER AND STRONGER SIFTER AND LEVELER CHAINS
- RE-ENFORCED LEVELER BARS
- 1 1/2" DIAMETER SIFTER AND LEVELER SHAFTS (1 1/4" ON STANDARD MACHINE)
- LARGER SIFTER AND LEVELER MOTORS (34% LARGER ON SIFTER, 45% LARGER ON LEVELER)
- SPIRAL BEATER BAR
- 12 PLY TIRES



4250 STANDARD PROFILE MODEL



Visit Us Online: [www.kelleymfg.com](http://www.kelleymfg.com)



## AVAILABLE OPTIONS:

- TOTAL CLEANOUT KIT
- TANDEM AXLE
- ELECTRIC CONTROLS
- SPREADER ATTACHMENT

## SPECIFICATIONS:

	<u>MODEL 4250</u>	<u>MODEL 4250LP</u>
WEIGHT	TANDEM WHEELS: 5,570 LB SINGLE WHEELS: 5,345 LB	TANDEM WHEELS: 5,400 LB SINGLE WHEELS: 5,180 LB
WIDTH	90"	90"
HEIGHT	76"	66"
LENGTH	270"	270"
TANK CAPACITY	165 CUBIC FT	135 CUBIC FT
RECOMMENDED HP	55-65 PTO HP	55-65 PTO HP
TIRE SIZE	TANDEM AXLE MODEL: 9.5Lx15 (12 PLY) SINGLE AXLE MODEL: 12.5Lx16 (12 PLY)	TANDEM AXLE MODEL: 9.5Lx15 (12 PLY) SINGLE AXLE MODEL: 12.5Lx16 (12 PLY)
CONVEYORS	667X PINTLE CHAIN ON FLOOR CONVEYOR 662 ON LOADING, LEVELING CONVEYORS	667X PINTLE CHAIN ON FLOOR CONVEYOR 662 ON LOADING, LEVELING CONVEYORS
TONGUE	SWIVEL CLEVIS, MANUAL SIDE ADJUSTMENT	SWIVEL CLEVIS, MANUAL SIDE ADJUSTMENT
DEPTH CONTROL	RAISED, LOWERED (FROM TRACTOR) WITH HYDRAULIC CYLINDER	RAISED, LOWERED (FROM TRACTOR) WITH HYDRAULIC CYLINDER
HYDRAULIC PUMP	MOUNTS TO TRACTOR PTO SHAFT, 540 RPM	MOUNTS TO TRACTOR PTO SHAFT, 540 RPM
BLADE	BEVELED, HIGH STRENGTH STEEL	BEVELED, HIGH STRENGTH STEEL



## WHY CHOOSE KMC PHC:

- DESIGNED TO RUN COOLER THAN COMPETITION.
- BEARING LIFE IS LONGER, ESPECIALLY IF GREASED PROPERLY.
- NO EXPANDED METAL IN THE SIFTER FRAME MEANS NO ISSUES WITH RUSTING.
- TIME IS MONEY AND THE KMC PHC IS MADE TO RUN FASTER AND MORE EFFICIENTLY.
- DESIGNED TO VARY THE AMOUNT OF CAKE REMOVED IN THE HOUSE. DETACHING TROUGH WILL ADJUST THE AMOUNT OF CAKE REMOVED.



# POULTRY HOUSE CLEANOUT MACHINES

## FEATURES:

- HEAVY DUTY
- STANDARD HEIGHT
- LARGER & STRONGER SIFTER & LEVELER BARS
- SPIRAL BEATER BAR
- 1 1/2" DIAMETER SIFTER & LEVELER SHAFTS (1 1/4" ON STANDARD MACHINE)
- RE-ENFORCED FEEDER REEL
- 12 PLY TIRES

## DUMP MODELS

### MODEL 4260D



### UNLOADS QUICKLY & GREAT FOR COMPOSTING





# CHOOSE KMC

- SUPERIOR SERVICE AFTER THE SALE.
- EXCELLENT STOCKING PROGRAM FOR PARTS.
- RESALE VALUE OF KMC EQUIPMENT IS VERY GOOD.

# MODEL 4265 LPD



LARGER & STRONGER SIFTER & LEVELER CHAINS



SPIRAL BEATER BAR

## SPECIFICATIONS:

### MODEL 4260D

WEIGHT	TANDEM WHEELS: 5,570 LB SINGLE WHEELS: 5,345 LB
WIDTH	82"
HEIGHT	74"
LENGTH	270"
TANK CAPACITY	170 CUBIC FEET
RECOMMENDED HP	55-65 PTO HP
TIRE SIZE	TANDEM AXLE: 9.5L x 15 (12 PLY) SINGLE AXLE: 12.5L x 16 (12 PLY)
CONVEYORS	667X PINTLE CHAIN ON SIFTER & LEVELER
TONGUE	SWIVEL CLEVIS, MANUAL SIDE ADJUSTMENT
DEPTH CONTROL	RAISED, LOWERED (FROM TRACTOR) WITH HYDRAULIC CYLINDER
HYRAULIC PUMP	MOUNTS TO TRACTOR PTO SHAFT, 540 RPM
BLADE	BEVELED, HIGH STRENGTH STEEL

### MODEL 4265LPD

TANDEM WHEELS: 7,000 LB SINGLE WHEELS: 5,345 LB
86" AT HINGE BOLTS
66" TANDEM AXLE
70" SINGLE AXLE 12.5 L16 TIRES
69" SINGLE AXLE 11 L15 LRF TIRES
270"
170 CUBIC FEET
55-65 PTO HP
TANDEM AXLE MODEL: 26x12x12 (12 PLY) SINGLE AXLE MODEL: 12.5 L16 (12 PLY)
667X PINTLE CHAIN ON SIFTER & LEVELER
SWIVEL CLEVIS, MANUAL SIDE ADJUSTMENT
RAISED, LOWERED (FROM TRACTOR) WITH HYDRAULIC CYLINDER
MOUNTS TO TRACTOR PTO SHAFT, 540 RPM
BEVELED, HIGH STRENGTH STEEL

Visit Us Online: [www.kelleyvmfg.com](http://www.kelleyvmfg.com)

**KMC**

KELLEY

# POULTRY HOUSE CLEANOUT MACHINES

## SPIRAL BEATER BAR

*KEY COMPONENT IN ALL KMC  
CLEANOUT MACHINE MODELS*

**PATENTED**

## **CONSIDER THE FOLLOWING BENEFITS:**

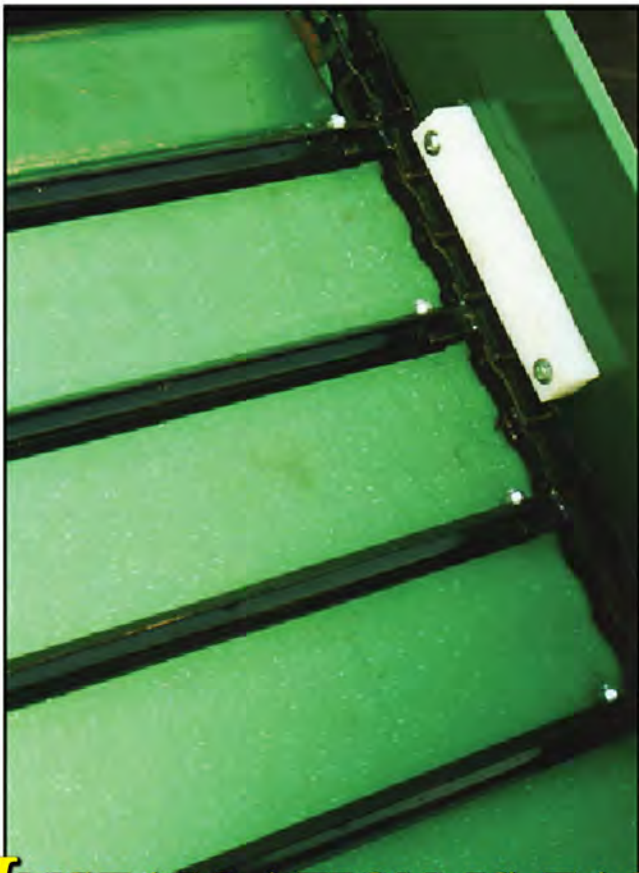
- **INCREASED MACHINE OPERATIONAL SPEED AND EFFICIENCY**  
THE KMC SPIRAL BEATER BAR CAN INCREASE THE OVERALL SPEED AND EFFICIENCY OF THE POULTRY HOUSE CLEANER.
- **RUN DEEPER**  
THE BEATER REEL HAS 7 3/4 INCH TEETH AS WELL AS A NEW SINGLE AXLE DESIGN THAT ALLOWS THE POULTRY HOUSE CLEANER TO RUN DEEPER IN THE LITTER FOR MORE EFFICIENT CLEANOUT.
- **LESS STALLING**  
BECAUSE OF THE NEW *PATENTED* SPIRAL DESIGN, THE MACHINE WILL PERFORM MORE EFFICIENT WITH LESS STALLING OF THE BEATER BAR. ONLY TWO OF THE 7 3/4 INCH TINES WILL STRIKE THE GROUND AT THE SAME TIME, AS COMPARED TO ELEVEN TINES ON THE PREVIOUS DESIGN.

Consider the following testimonial from one local grower....*"I compared the KMC Poultry House Cleaner with the old beater reel to the same KMC PHC with the new and improved beater reel. Using the PHC with the old beater reel I could run the tractor in A1 at about 1900 RPMs and 1 plus MPH. Using the machine with the new beater reel I could run the tractor in A2 at almost 2 MPH. The new beater reel is a significant improvement in the efficiency of the KMC PHC."*

# POULTRY HOUSE CLEANOUT MACHINES

## TOTAL CLEANOUT KIT OPTION

AVAILABLE ON ALL PHC MODELS



***INSTALLATION IS EASIER AND FASTER WITH  
THE TOTAL CLEANOUT KIT!!!!***

TWO POLYETHYLENE PANELS WILL BE SUBSTITUTED IN PLACE OF THE FOUR STEEL PLATES THAT ARE CURRENTLY INSTALLED FOR TOTAL CLEANOUT OF HOUSES. THE TOTAL CLEANOUT KIT CONSISTS OF TWO POLYETHYLENE PANELS, INSTALLATION HARDWARE, AND METAL STRIPS!



# POULTRY HOUSE WALL CLEANER

## MODEL 4610

The model 4610 KMC Wall Cleaner is designed to efficiently pull litter away from the wall of poultry houses making further cleaning with hand tools unnecessary. The blade and auger assembly is mounted on a roller and spring mechanism that allows it to slide very close around wall post or concrete wall footings. This new model has been extensively tested, and KMC releases it to the market with confidence that users will be happy with performance and quality.

### IMPROVEMENTS OVER MODEL 4600



- TIGHTER CLEANING AROUND POSTS
- ENTIRE AUGER AND BLADE MOVES AS A SINGLE UNIT ALLOWING THE AUGER TO REMAIN CLOSE TO THE WALL FOR CLOSER LITTER REMOVAL
- MORE SIDE OFFSET ALLOWS TRACTOR CENTER LINE TO OPERATE 70 INCHES FROM THE WALL FOR MORE CLEARANCE AROUND WALL APPLIANCES
- LESS AUGER STALLING IN HEAVY CONDITIONS
- LARGER DISCHARGE SPACE BETWEEN BLADE AND HYDRAULIC MOTOR FOR SMOOTHER FLOW OF MATERIAL

### STANDARD FEATURES:

- NEW TRASH GUARD FRONT PANEL FOR SHORT CONCRETE WALL FOOTING REDUCES THE LITTER THAT MAY GET THROWN ON TOP OF THE CONCRETE FOOTING
- SPRING LOADED BLADE AND AUGER ASSEMBLY FOR SLIDING AROUND WALL POST
- SEMI-PNEUMATIC, VERTICALLY ADJUSTABLE, 6 X 12 REAR GAUGE WHEELS FOR SMOOTHER CUTS AND LESS GOUGING
- HORIZONTALLY AND VERTICALLY ADJUSTABLE WALL FOLLOWER WHEEL FOR CONCRETE WALL FOOTINGS



# WALL CLEANER IN ACTION:

- REMOVES LITTER FROM WALLS FOR CONVENIENT PICK-UP BY CLEANOUT MACHINE
- BLADE EXTENSION RETRACTS UNDER SPRING PRESSURE WHEN WALL POSTS ARE ENCOUNTERED
- LITTER CAN BE MOVED FROM WALLS OF AVERAGE POULTRY HOUSE IN APPROXIMATELY 20 MINUTES



## SPECIFICATIONS:

BLADE WIDTH: 47.75"

MACHINE WIDTH: 7'5"

WEIGHT: 750 LB

AUGER: 12" DIAMETER, 0.25 THICK AT OUTSIDE EDGE

EXTENSION BLADE: 28 1/2" LENGTH,

SPRING LOADED RETURN

BLADE: BEVELED, HIGH STRENGTH STEEL



# POULTRY HOUSE WASHER/SPRAYER

## MODEL 4410



**CLEANS & DISINFECTS INTERIOR OF HOUSE  
& EQUIPMENT FOR DISEASE CONTROL**

- *SIDE FILL ALLOWS FOR EASIER ACCESS*
- *QUICK FILL FEATURE SAVES TIME WHEN FILLING TANK*



## FEATURES:

- POWERFUL, HIGH VOLUME PTO PUMP DELIVERS UP TO 725 PSI OF PRESSURE FOR EFFECTIVE WASHING AND SPRAYING OPERATIONS
- DUAL REVERSIBLE SWIVEL NOZZLES FOR SPRAYING FLOORS OR WASHING CEILINGS
- HAND HELD SPRAY GUNS OFFERED WITH ADJUSTABLE SPRAY PATTERNS AND 50FT RETRACTABLE OR 125FT MANUAL CRANK SPRAY REELS FOR CLEANING HARD TO REACH PLACES



## SPECIFICATIONS:

TANK: LOW PROFILE, 500 GALLON CAPACITY, RECIRCULATING, POLY CONSTRUCTION

PUMP: DIAPHRAGM-TYPE, 39 1/2 GPM AT 725 PSI, PTO OPERATED, 540 RPM

WEIGHT: APPROXIMATELY 1,100 LB

HEIGHT: 60"

LENGTH: 168 1/2"

WIDTH: 76 3/4"



VISIT US ONLINE: [www.kelleymfg.com](http://www.kelleymfg.com)

OVER 50 YEARS OF DEPENDABLE  
EQUIPMENT FOR PROGRESSIVE FARMING

KELLEY MANUFACTURING CO.

P.O. Box 1467  
TIFTON, GA 31793  
1-800-444-5449

**KMC**

KELLEY

[www.kelleymfg.com](http://www.kelleymfg.com)

Follow us on

